

P2A Navigator Release Notes

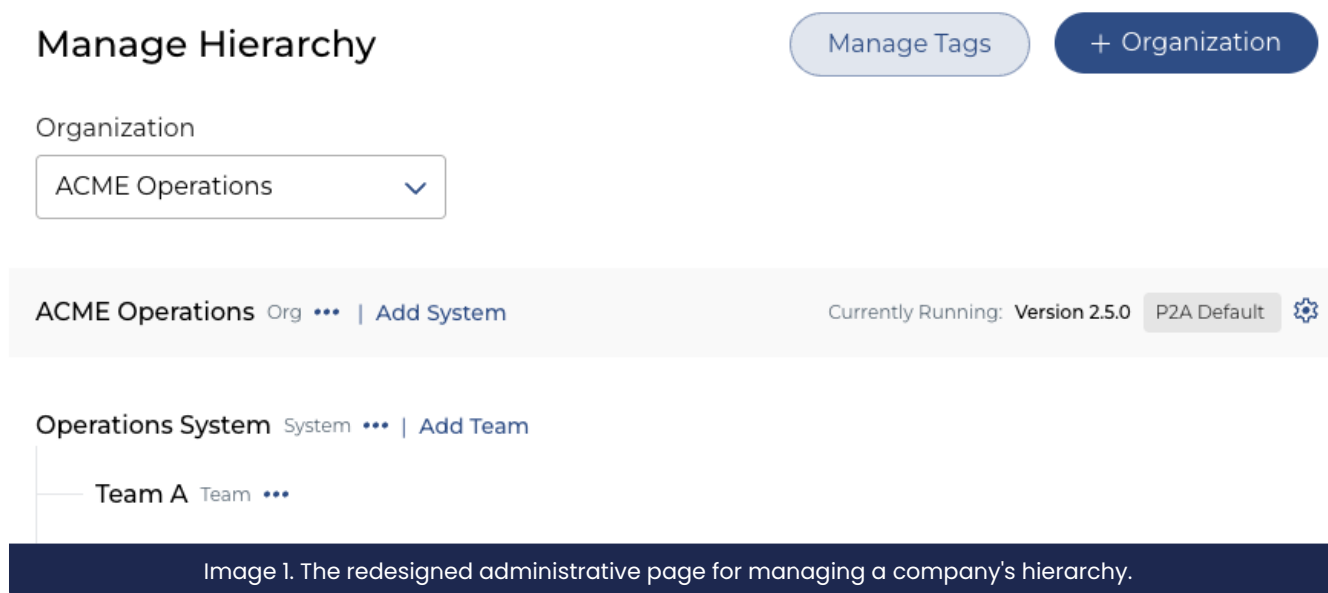
October 9, 2025

10/08/2025 4:03 pm CDT

Hi, we have new release information for P2A Nav. Here's what we're changing:

Beta Features

The Manage Hierarchy administrative page has been redesigned to make it more user-friendly.



The team wanted to improve the layout and functionality before adding support to manage the version of Path to Agility® used by each organization. Yes, we now support two different versions!

Introducing a new version of Path to Agility specifically geared to organizations that leverage the Scaled Agile Framework (SAFe®). With this version, all capabilities have descriptions and acceptance criteria in alignment with SAFe. We will continue to support our default version with our standard language in addition to the new SAFe version.

Set Organization Version

Currently Running: Version 2.5.0 P2A Default Chosen by: Company Chosen on: 31-Mar-23 Set by:

Change Version

Wording for descriptions and capabilities will change throughout P2A. Polls/surveys created prior to this change will not update. All polls/surveys after this change will use the new version.

P2A Default Currently Running ▼

SAFe®

Confirm

Image 2. The modal used to set or update the Path to Agility version for an organization.

Feature summary:

- Redesigned administrative support for managing the company hierarchy
- Support for a new, Scaled Agile Framework (SAFe®) version of Path to Agility®
 - Company Admins can manage the Path to Agility version for each organization
 - Agile Capability descriptions and acceptance criteria for an organization (and its systems and teams) will be determined by the version setting for that organization
 - Organizations are initially setup on the default (current) version
 - When the version is changed, any existing polls (live or async) will continue to use the language for the version that was set when they were launched. New polls will use the language from the new version.

Bug Fixes

- Fixed a scenario, which was generating an error when switching between companies. The error was related to the rendering of certain reports.

As always, contact us either by clicking the Contact Support button in the top navigation of Navigator, sending a message in our Path to Agility Slack, or by writing to us at support@pathtoagility.com. Thank you for being a Path to Agility Navigator user!

[The Assessments page](#)