

P2A Navigator Release Notes October 30, 2025

10/29/2025 5:25 pm CDT

Hi, we have new release information for P2A Nav. Here's what we're changing:

New Features

Manage Hierarchy Updates

The Manage Hierarchy administrative page has been redesigned. In addition to a redesigned Manage Hierarchy page, we're introducing a new version of Path to Agility specifically geared to organizations that leverage the Scaled Agile Framework (SAFe®). With this version, all capabilities have descriptions and acceptance criteria in alignment with SAFe. We will continue to support our default version with our standard language as well as the new SAFe version.

Note: The Manage Hierarchy page is now restricted to Company Admins.

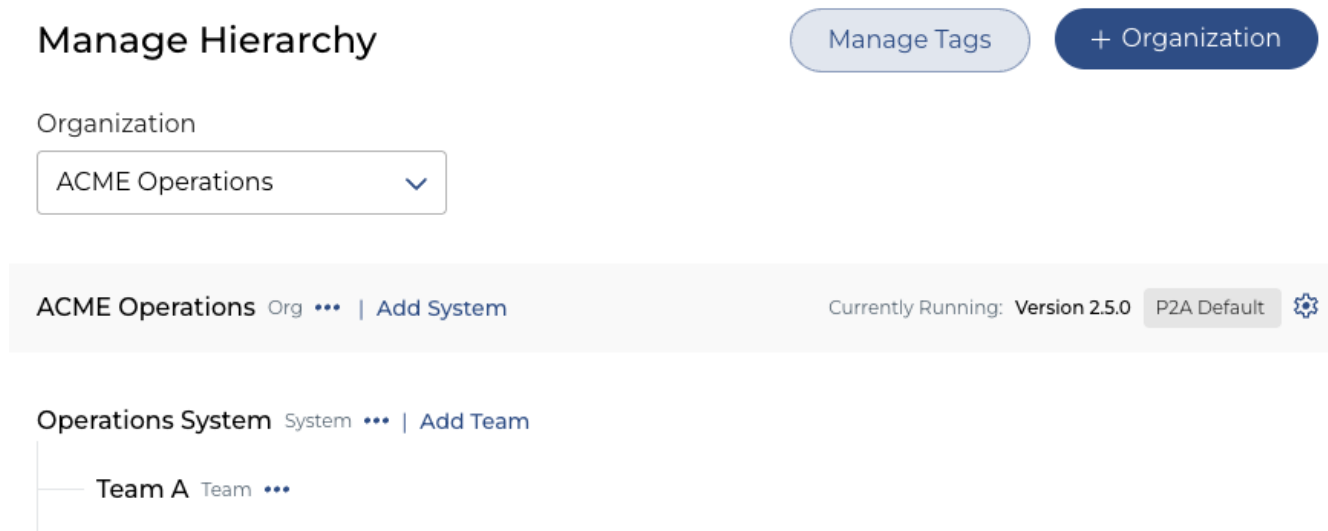


Image 1. The redesigned administrative page for managing a company's hierarchy with controls to set the P2A version for individual companies.

From the new Manage Hierarchy page, Company Admins can set the P2A version for an organization by clicking the gear icon and updating the version.

Set Organization Version

Currently Running: Version 2.5.0 P2A Default Chosen by: Company Chosen on: 31-Mar-23 Set by:

Change Version

Wording for descriptions and capabilities will change throughout P2A. Polls/surveys created prior to this change will not update. All polls/surveys after this change will use the new version.

The modal displays a dropdown menu with 'P2A Default' selected and 'Currently Running' status. Below it is a text input field containing 'SAFe®'. To the right is a 'Confirm' button.

Image 2. The modal, which opens when the gear icon is clicked, enables Company Admins to set the Path to Agility version for an organization.

Update Summary:

- Redesigned administrative support for [managing the company hierarchy](#)
- Access to the Manage Hierarchy page is now restricted to Company Admins
- Support for a new, Scaled Agile Framework (SAFe®) version of Path to Agility®
 - Company Admins can manage the Path to Agility version for each organization
 - Agile Capability descriptions and acceptance criteria for an organization (and its systems and teams) will be determined by the version setting for that organization
 - Organizations are initially setup on the default (current) version
 - When the version is changed, any existing polls (live or async) will continue to use the language for the version that was set when they were launched. New polls will use the language from the new version.

Changes (to existing functionality)

- Updated the popup on the live poll facilitator view that displays responses so that it hides/disappears when you click anywhere else on the screen. Previously, to close the popup, users had to click the responses area a second time.
- Updated the Actions List view to display a message informing users when no actions exist or no actions matching the current filter settings exist.

As always, contact us either by clicking the Contact Support button in the top navigation of Navigator, sending a message in our Path to Agility Slack, or by writing to us at support@pathtoagility.com. Thank

you for being a Path to Agility Navigator user!
